



FOR YOUTH DEVELOPMENT®  
FOR HEALTHY LIVING  
FOR SOCIAL RESPONSIBILITY

# FOREVER CREATING SUMMER SMILES



## Penobscot Bay YMCA 2021 SUMMER CAMPS

- Discovery Camp
- Camp Wonder!
- Snow Bowl Camp
- Adventure Camp

FOR MORE INFORMATION:  
P: 207.236.3375  
W: [www.penbayymca.org](http://www.penbayymca.org)  
E: [camp@penbayymca.org](mailto:camp@penbayymca.org)

**RESERVE  
YOUR SPOT  
TODAY**





FOR YOUTH DEVELOPMENT®  
FOR HEALTHY LIVING  
FOR SOCIAL RESPONSIBILITY

# SUMMER CAMP KNOW BEFORE YOU GO!

## Your child is in good hands.

We can't wait to welcome your child to enjoy summer as it should be...  
**fun, action-packed, and most of all, safe!**

### What information is needed to register for Summer Camp?

- **Immunization Records** - your child's Pediatrician's office may fax records directly to the Y at 236.8458. Records may also be printed and dropped off at our Rockport branch.
- Please complete the Y's - **Camp Registration Form, Payment/Cancellation/Change Agreement, Camp Waivers and Camp Payment Plan** (if not paying in full).
- **All forms can be found on the Y's website at [www.penbayymca.org](http://www.penbayymca.org).** These forms can be downloaded, printed and dropped off at the Y's Rockport branch location or completed online and emailed to: [camp@penbayymca.org](mailto:camp@penbayymca.org).

### Here's what to expect during the camp day:

- **Drop-off:** Parents will remain in their vehicle; health screening questions will be conducted on each camper before the child is cleared to exit the vehicle and join camp.
- **Pick-up:** Parents will remain in vehicle and a Camp Director will radio your child's pod for camper to be signed out.
- Campers will be divided into small groups, **called pods**, of 14 or less.
- Campers will be with the same pod and counselors for the entire week, including lunches.
- Campers and counselors will wear masks at all times with the exception of eating and drinking.
- Each pod will have extra sanitizing and cleaning products.
- Activities may differ from camp to camp and be location specific. We will be keeping 6' apart when possible: swimming, hiking, canoeing, arts & crafts, movies, and various pod field games.
- Requiring campers to wash their hands before and after meals and snacks along with additional times throughout the day.
- Sanitizing areas campers are in throughout the day.
- Disinfecting equipment and toys before and after use.
- Limiting person to person contact.
- Field Trips will be dependent on current COVID restrictions and protocols.

### What you can do to help:

- Talk with your child about washing hands, keeping hands away from mouth, nose and eyes and not sharing food or beverages.
- Please keep your child home if sick or with fever.
- Before returning to camp after an illness, please provide a doctor's note.
- Remind your child that the **Y is safe** and to **have fun!**

### YMCA Bus

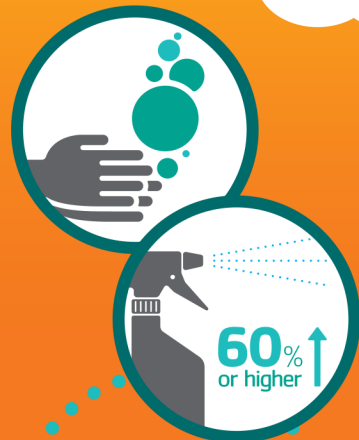
A bus is available to and from Rockland South School on a first-come, first-serve basis. The bus departs at 8:45 AM and returns to South School between 4:30-4:45 PM. Seating is limited and is free of charge. Masks will be required to be worn by campers and staff. **To reserve your child's seat, please speak with Benjie Blake, 236.3375 ext. 204 or email [bblake@penbayymca.org](mailto:bblake@penbayymca.org).**

### Financial Assistance

Summer Camp at the Y is about discovery, exploring nature, finding new talents, and making lasting friendships. Camp is another avenue provided by the Y to fulfill our mission of youth development, healthy living and the social needs of individuals and families in the communities we serve. **YMCA camps are accessible to everyone regardless of financial need and we are proud to say that no child is turned away.**

If you are in need of financial assistance for Summer Camp, it is in your best interest to first apply to the Department of Health and Human Services (DHHS). If you qualify, you could receive assistance for all 11 weeks of camp. For more information visit [www.maine.gov/mymaineconnections](http://www.maine.gov/mymaineconnections) or call the Rockland office at 207.596.4200. If you are approved by DHHS, please contact Debbie Tyler: [dt Tyler@penbayymca.org](mailto:dt Tyler@penbayymca.org) or 236.3375 x 211. The Y will need a copy of the DHHS letter stating what they will pay and what your parent fee will be.

**If you don't qualify for DHHS assistance**, please ask our Welcome Center folks for a Camp Scholarship Application or download from our website at [www.penbayymca.org](http://www.penbayymca.org). Once the scholarship is awarded, you will receive a letter with the scholarship amount and the remaining balance you are responsible for paying prior to the weeks of camp awarded. The Y provides two weeks of scholarship assistance per child.





FOR YOUTH DEVELOPMENT®  
FOR HEALTHY LIVING  
FOR SOCIAL RESPONSIBILITY

# Penobscot Bay YMCA DISCOVERY CAMP

## Ages 4-6

Please Note: Campers must meet Fall 2021 Kindergarten public school eligibility.

**Discovery Camp** is designed for first time campers! This all day camp is geared toward children who have completed or are eligible for Kindergarten. Your camper will be excited about new experiences while having the comfort of a consistent routine. Campers will participate in a variety of arts, crafts and games with weekly adventures to some favorite local spots.

### WHAT IT'S ALL ABOUT:

- This all day camp runs from 9:00 AM – 4:00 PM.
- For children to enroll in Discovery Camp, campers must meet Fall 2021 kindergarten public school eligibility and be born before 10/15/16.
- Before and After Care are available for this camp at the Snow Bowl for an additional fee and must be paid in full at the time of registration.
- Before Care runs 7:30-9:00 AM.
- After Care runs 4:00-5:30 PM.
- Discovery Camp kids are bused each morning at 8:45 AM from the Snow Bowl to the Lincolnville Central School.
- Parents wishing to drop off their campers at LCS, may arrive by 9:15 AM.
- All campers must be checked in by YMCA Camp Staff.
- Campers who are not in need of After Care may be picked up at LCS by 3:45 PM.
- Campers will be bused from LCS to the Snow Bowl and arrive at 4:00 PM for pickup or After Care.
- Weekly activities include art, indoor/outdoor games, reading and visits to local beaches and parks.
- Mondays & Tuesdays will be spent at our LCS home base.
- If busing campers can be done safely, while following COVID protocols, Discovery Camp will enjoy local field trips on Wednesdays and Fridays to local parks, beaches, and other exciting adventures.



**EVERY WEEK IS AN  
ADVENTURE!**

**HOME BASE LOCATION:**  
📍 Lincolnville Central School

### SUMMER CAMP DATES:

- Pre-Week: June 21 – 25
- Week 1: June 28 – July 2
- Week 2: July 5 – 9
- Week 3: July 12 – 16
- Week 4: July 19 – 23
- Week 5: July 26 – 30
- Week 6: August 2 – 6
- Week 7: August 9 – 13
- Week 8: August 16 – 20
- Week 9: August 23 – 27
- Post Week: Aug. 30 – Sept. 3

### WEEKLY COST:

**Members: \$175/week**  
**Participants: \$220/week**

- Before & After Care: \$35/week (for each)
- Before & After Care must be paid in full upon registration.
- Scholarships are available. Please inquire at our Welcome Center.
- Benjie Blake, Camp Director: 236.3375, ext. 204 or [bblake@penbayymca.org](mailto:bblake@penbayymca.org)



FOR YOUTH DEVELOPMENT®  
FOR HEALTHY LIVING  
FOR SOCIAL RESPONSIBILITY



# Penobscot Bay YMCA SNOW BOWL CAMP

## Ages 7-10

**Please Note: Campers must be 7 years old at the start of their camp week.**

Get ready for some fun this summer at **Snow Bowl Camp** presented by the Penobscot Bay YMCA. Campers will experience traditional camp excitement with a cool new twist each week! Our staff are specifically trained to have fun with safety being their #1 priority. Every Camp Counselor is certified in First Aid, CPR & AED with several being Red Cross Certified Lifeguards. Our staff have also been trained in bullying prevention.

### WHAT IT'S ALL ABOUT:

- This all day camp runs from 9:00 AM - 4:00 PM.
- Snow Bowl Camp is Monday-Friday for kids ages 7-10.
- Before and After Care are available for this camp at the Camden Snow Bowl for an additional fee and must be paid in full at the time of registration.
- Before Care runs from 7:30 - 9:00 AM.
- After Care runs from 4:00 - 5:30 PM.
- Parents who do not participate in Before Care may drop their campers off at 9:00 AM.
- All campers must be checked in by YMCA Camp Staff.
- Campers who are not in need of After Care may be picked up at the Snow Bowl by 4:00 PM.
- Campers in need of After Care will stay at the Snow Bowl.
- Each week consists of swimming, field games, arts & crafts, nature hikes, STEM projects, canoeing and more!
- On Mondays, campers will spend part of their morning at the Y taking swim tests. The rest of their day will be spent at the Snow Bowl facilities.
- If busing campers can be done safely, while following COVID protocols, Snow Bowl Camp will enjoy local field trips on Tuesdays and Thursdays to local parks, beaches, and other exciting adventures.



### EVERY WEEK IS AN ADVENTURE!



### HOME BASE LOCATION:

📍 Camden Snow Bowl

### SUMMER CAMP DATES:

- Pre-Week: June 21 - 25
- Week 1: June 28 - July 2
- Week 2: July 5 - 9
- Week 3: July 12 - 16
- Week 4: July 19 - 23
- Week 5: July 26 - 30
- Week 6: August 2 - 6
- Week 7: August 9 - 13
- Week 8: August 16 - 20
- Week 9: August 23 - 27
- Post Week: Aug. 30 - Sept. 3

### WEEKLY COST:

Members: \$165/week  
Participants: \$210/week

- Before & After Care: \$35/week (for each)
- Before & After Care must be paid in full upon registration.
- Scholarships are available. Please inquire at our Welcome Center.
- Benjie Blake, Camp Director: 236.3375, ext. 204 or [bblake@penbayymca.org](mailto:bblake@penbayymca.org)



FOR YOUTH DEVELOPMENT®  
FOR HEALTHY LIVING  
FOR SOCIAL RESPONSIBILITY

# Penobscot Bay YMCA CAMP WONDER!

## Ages 7-12

**Please Note: Campers must be 7 years old at the start of their camp week.**

Come enjoy summer with **Camp Wonder!** (formerly RHY Summer Camp) where campers make new friends and gain self-confidence! Each week campers enjoy activities such as sports, games, arts & crafts, reading, swimming and weekly field trips! Camp Wonder! offers highly trained staff at a low camper-to-staff ratio making our camp a perfect choice for parents who need a fun, safe place for their children during summer break with safety being their #1 priority.

### WHAT IT'S ALL ABOUT:

- This all day camp runs from 9:00 AM – 4:00 PM.
- Camp Wonder! is a Monday – Friday, activity based day camp for children ages 7-12.
- The new Home Base for Camp Wonder is at Thomaston Municipal Building.
- Before and After Care are available for this camp at the Thomaston Municipal Building for an additional fee.
- Before Care runs from 7:30 – 9:00 AM.
- After Care runs from 4:00 – 5:30 PM.
- All campers must be checked in by YMCA Camp Staff.
- Parents who do not participate in Before Care may drop their campers off at 9:00 AM.
- Campers needing After Care will stay at the Thomaston Municipal Building.
- Campers who are not in need of After Care may be picked up at the Thomaston Municipal Building by 4:00 PM.
- Each week consists of art, indoor and outdoor games, reading, and many other fun activities.
- If busing campers can be done safely, while following COVID protocols, Camp Wonder! will enjoy field trips on Tuesdays and Thursdays to local parks, beaches, and other exciting adventures.



## EVERY WEEK IS AN ADVENTURE!



**NEW!**

**HOME BASE LOCATION:**

📍 Thomaston Municipal Building

### SUMMER CAMP DATES:

- Pre-Week: June 21 – 25
- Week 1: June 28 – July 2
- Week 2: July 5 – 9
- Week 3: July 12 – 16
- Week 4: July 19 – 23
- Week 5: July 26 – 30
- Week 6: August 2 – 6
- Week 7: August 9 – 13
- Week 8: August 16 – 20
- Week 9: August 23 – 27
- Post Week: Aug. 30 – Sept. 3

### WEEKLY COST:

**Members: \$160/week**

**Participants: \$160/week**

- Before & After Care: \$35/week (for each)
- Before & After Care must be paid in full upon registration.
- Scholarships are available. Please inquire at our Welcome Center.
- Benjie Blake, Camp Director: 236.3375, ext. 204 or [bblake@penbayymca.org](mailto:bblake@penbayymca.org)



FOR YOUTH DEVELOPMENT®  
FOR HEALTHY LIVING  
FOR SOCIAL RESPONSIBILITY

# Penobscot Bay YMCA ADVENTURE CAMP

## Ages 11-13

Our **Adventure Day Camp** is geared for Pre-Teens & Teens who love spending time with their friends and are looking for some adventure this summer! This camp is designed to give campers a new and exciting experience beyond our traditional camp programs. Every day, our campers will experience exploring the outdoors, hiking, boating, swimming, fishing, climbing and group challenges. These older youth will have all of fun of a summer camp in a more mature environment.

### WHAT IT'S ALL ABOUT:

- This all day camp runs from 9:00 AM - 4:00 PM.
- Snow Bowl Camp is Monday-Friday for kids ages 11-13.
- Before and After Care are available for this camp at the Snow Bowl for an additional fee and must be paid in full at the time of registration.
- Before Care runs from 7:30 - 9:00 AM.
- After Care runs from 4:00 - 5:30 PM.
- Parents who do not participate in Before Care may drop their campers off at 9:00 AM.
- All campers must be checked in by YMCA Camp Staff.
- Campers who are not in need of After Care may be picked up at the Snow Bowl by 4:00 PM.
- Campers in need of After Care will stay at the Snow Bowl.
- Each week consists of outdoor exploration, team building, climbing, fishing, hiking, swimming and ecological education.
- If busing campers can be done safely, while following COVID protocols, Adventure Campers will explore local parks, beaches, and other exciting adventures throughout the week.



EVERY WEEK IS AN  
**ADVENTURE!**



**HOME BASE LOCATION:**  
Camden Snow Bowl

### SUMMER CAMP DATES:

- **Pre-Week: June 21 - 25**
- **Week 1: June 28 - July 2**
- **Week 2: July 5 - 9**
- **Week 3: July 12 - 16**
- **Week 4: July 19 - 23**
- **Week 5: July 26 - 30**
- **Week 6: August 2 - 6**
- **Week 7: August 9 - 13**
- **Week 8: August 16 - 20**
- **Week 9: August 23 - 27**
- **Post Week: Aug. 30 - Sept. 3**

### WEEKLY COST:

**Members: \$175/week**  
**Participants: \$220/week**

- Before & After Care: \$35/week (for each)
- Before & After Care must be paid in full upon registration.
- Scholarships are available. Please inquire at our Welcome Center.
- Benjie Blake, Camp Director: 236.3375, ext. 204 or [bblake@penbayymca.org](mailto:bblake@penbayymca.org)